



REAL TIME AUTOMATION

IEC 61131 CoDeSys Trainer Platform



Technologies

- Standard IEC 61131-3 programming using the popular CoDeSys V3 IDE
- Open Ethernet communication using EtherCAT technology
- Turn-key curriculum developed by the leading IEC 61131-3 education institute in North America
- Library of over 100 Functions and function blocks
- Expandable to include stepper and servo technology
- State-of-the-art membrane I/O technology (All I/O completely configurable)
- Three linear Actuators
- One rotary motors with integral position feedback
- 4-digit 15-segment alphanumeric display
- Built in HMI software

CoDeSys Development Panel

No PLC Hardware Required!!

Plug it in... Connect via Ethernet... Program — It's that Easy!!

Here's How it Works

The CoDeSys development trainer is specifically designed to train students and engineers on IEC 6131-3 programming of logic and motion control. Flexible design allows training from the most basic to the most challenging concepts in open standard PLC programming.

The associated software curriculum and the trainer allow a complete novice to learn how to program a PLC using the popular IEC 61131-3 compliant software CoDeSys V3. Each software training unit includes an HMI component for complete visualization of the trainer behavior both in simulation mode as well as with actual hardware commands.

The accompanying software training curriculum was developed by Dr. Kenneth J. Ryan, director of the Center for Applied Mechatronics at Alexandria Technical College. Dr. Ryan is a member of the PLCopen Board of Management with more than 8 years of experience training college students and corporate clients on the IEC 61131-3 programming standard.

Perfect For...

- High School Industrial Technology Programs
- Technical/Community Colleges
- University Engineering Departments

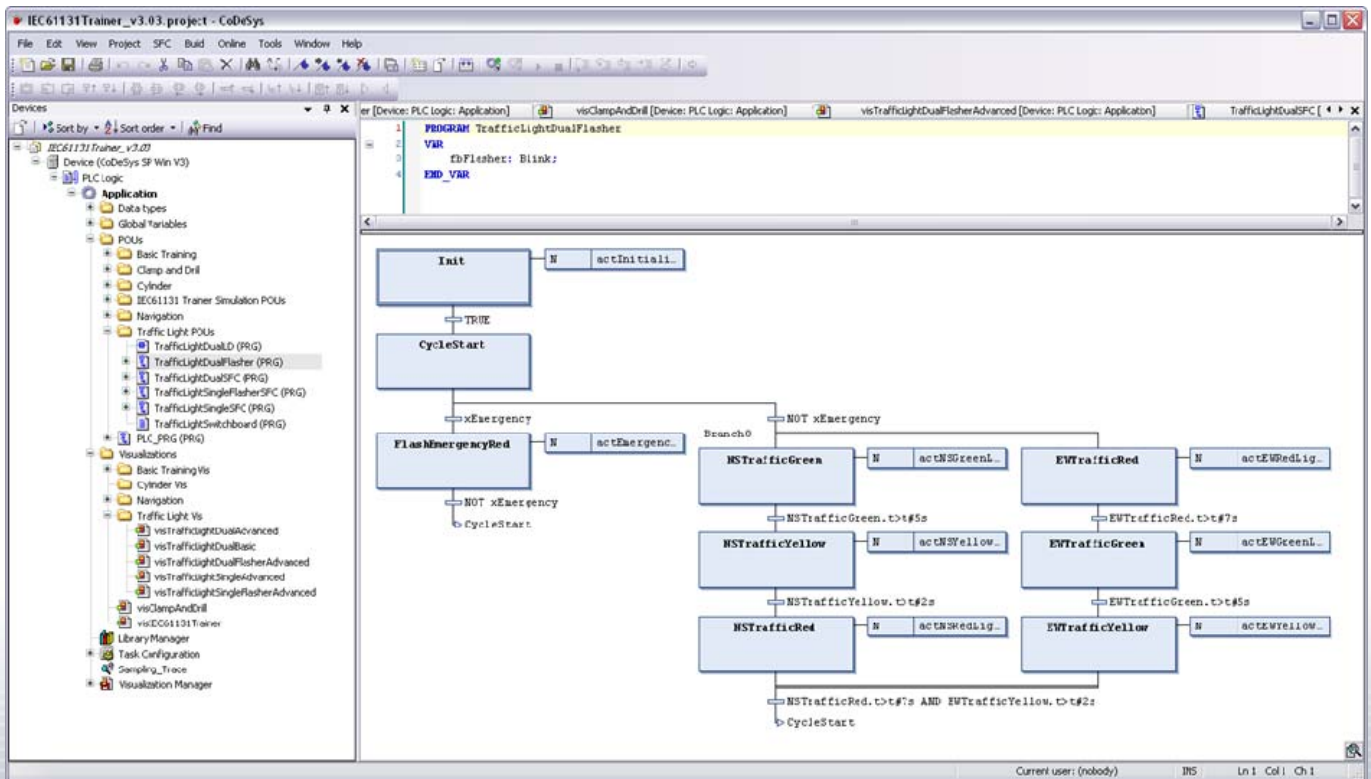
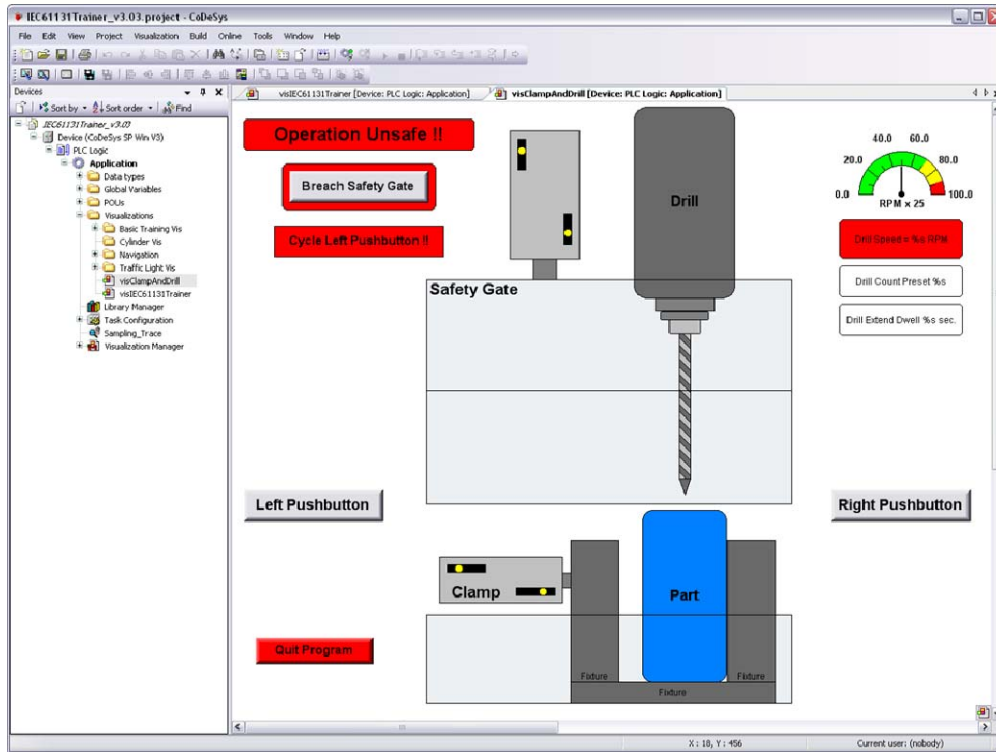
The Legend Begins

"It's likely that your business isn't industrial networking. And it shouldn't be. You make products, products that do wonderful things. Whatever it is that you make the process creates data. If you're a control engineer and your plants been around for more than a few years your plant floor is probably littered with devices that send out all kinds of data, and in most case data talking in a lot of different protocols. If you're an automation device developer you probably need to move your data into some other network. Either way, you've got a device conversion problem. You have devices that generate ASCII data, Modbus RTU, Ethernet TCP Data, DeviceNet data or some completely proprietary data and now you're the guy that has to move that data to some other network!"

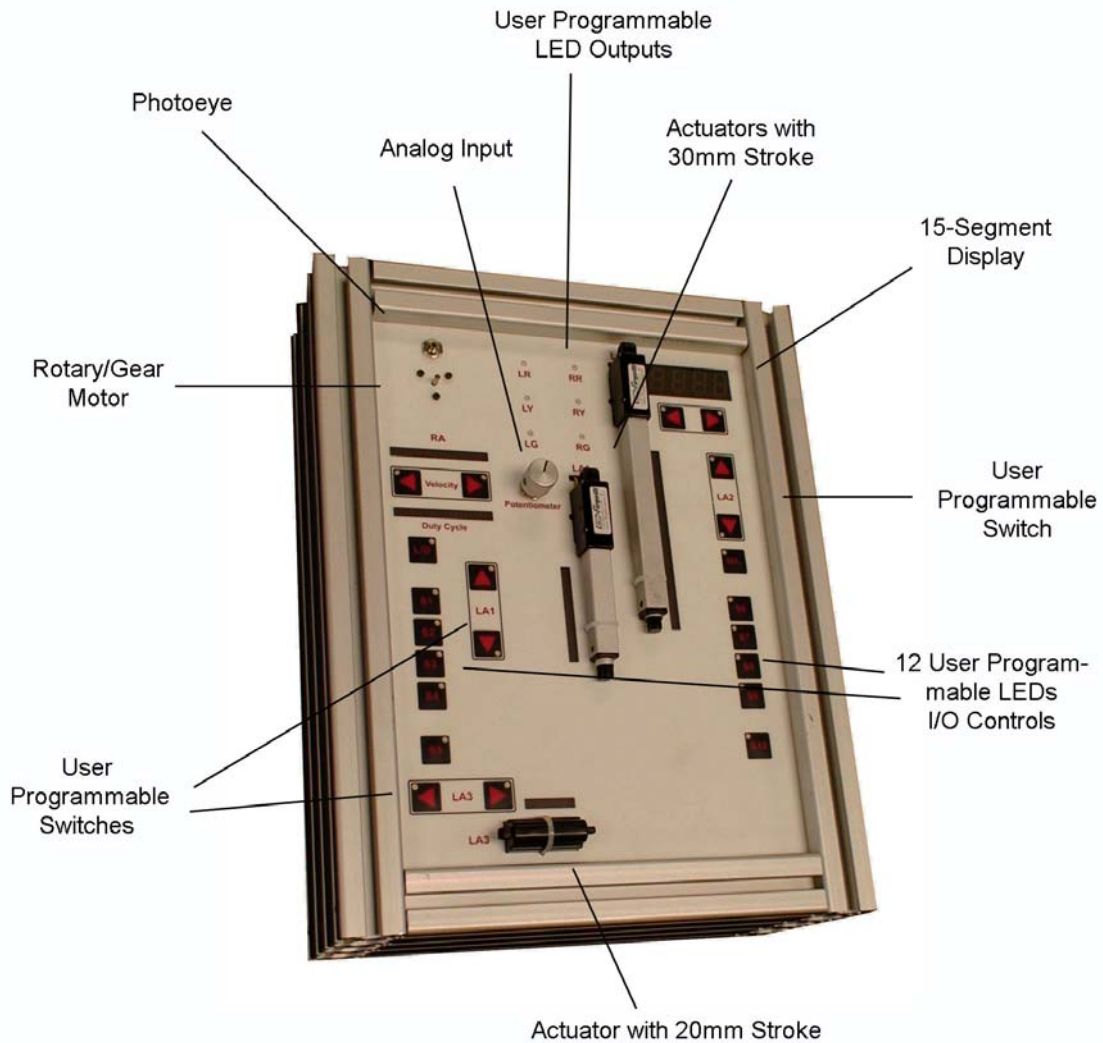
*I feel your pain... and better than my sympathy I have a solution for you. You see while your business isn't moving data around the factory floor mine is. In fact it is all we have done for more than twenty years now. Our 460 series of Device Converters line is the culmination of those twenty years. You can now move all of your data, where you want, when you want and how you want. Best of all **THE HARDEST PART IS OPENING THE BOX**".*

John Rinaldi

Users can easily create visualizations and programs using the trainer, as illustrated below.



REAL TIME AUTOMATION



Sales & Service

PLACING YOUR ORDER

Orders can be placed 24 hours per day. You can place your order by faxing 414-453-5125 or emailing orders@rtaautomation.com.

TECHNICAL SUPPORT

Phone Support: 1-800-249-1612 during normal business hours
Email Support: Is available by emailing support@rtaautomation.com

For More Information:



REAL TIME AUTOMATION

John Rinaldi
Networking Product Manager
1-800-249-1612
sales@rtaautomation.com

Our line of Gateways and Device Converters offer machine builders, system integrators and control engineers a full arsenal of communication converters. Designed with your needs in mind we strive to make the hardest part of setting up and maintaining our gateways taking them out of the box. The engineering of our products takes simplicity to a new level. Best of all, if you do need help we have a 24/7 support line operated by a real person located right here in the states.



460MMBS - BACnet/IP to Modbus RTU Master - The 460MMBS moves data between a group of Modbus RTU Slave devices and a BACnet/IP enabled Building Automation System (BAS). With the 460MMBS you have a device that you can quickly deploy and easily configure to access and integrate these devices into Building Automation Systems.



460ETCDM - DeviceNet to uLogix/PLC5/SLC505 - Easily move your DeviceNet device data to any Rockwell PLC. With the 460ETCDM you can now quickly and easily connect DeviceNet devices to one of your legacy programmable controllers like a PLC5E, SLC505 or MicroLogix.



460ESMC - EtherNet/IP to Modbus TCP Client - The 460ESMC moves registers and coils between a Modbus TCP network of Server devices and an EtherNet/IP Client like a ControlLogix® PLC. With the 460ESMC you have a device that you can quickly deploy and easily configure to access and integrate these Modbus devices into your EtherNet/IP network.



460ESDM - EtherNet/IP to DeviceNet Master - The 460ESDM module bundles your DeviceNet Slave I/O data and makes it available as an EtherNet/IP Server. The module provides complete DeviceNet Master and EtherNet/IP Server capability, making it the fastest way to move your DeviceNet Slave I/O data to EtherNet/IP.



490NBX - Raw TCP to EtherNet/IP - Seamlessly Transfer Data Between Your TCP Devices And All Rockwell PLCs Using EtherNet/IP. The 490NBX is the fastest way to move Raw TCP data to your PLC over EtherNet/IP.



435NBX - ASCII to PLC - The 435NBX not only converts ASCII serial data to EtherNet IP, it converts the data and writes it directly into your Allen Bradley PLC. The 435NBX is the best way to move ASCII Data to, in, and out of Logix, PLC5, and SLC Controllers.

For more information on these or other Real Time Automation Products, visit: www.rtaautomation.com/products.

