



ETHERNET/IP MODBUS MASTER

GATEWAY

QUICK START

Version 0.10

Catalog: 451EM

By Rick DeMorrow

Real Time Automation

2825 North Mayfair Rd Suite 11

Wauwatosa, WI 53222

+1 (414) 453-5100 Phone

+1 (414) 453-5125 Fax

www.rtaautomation.com

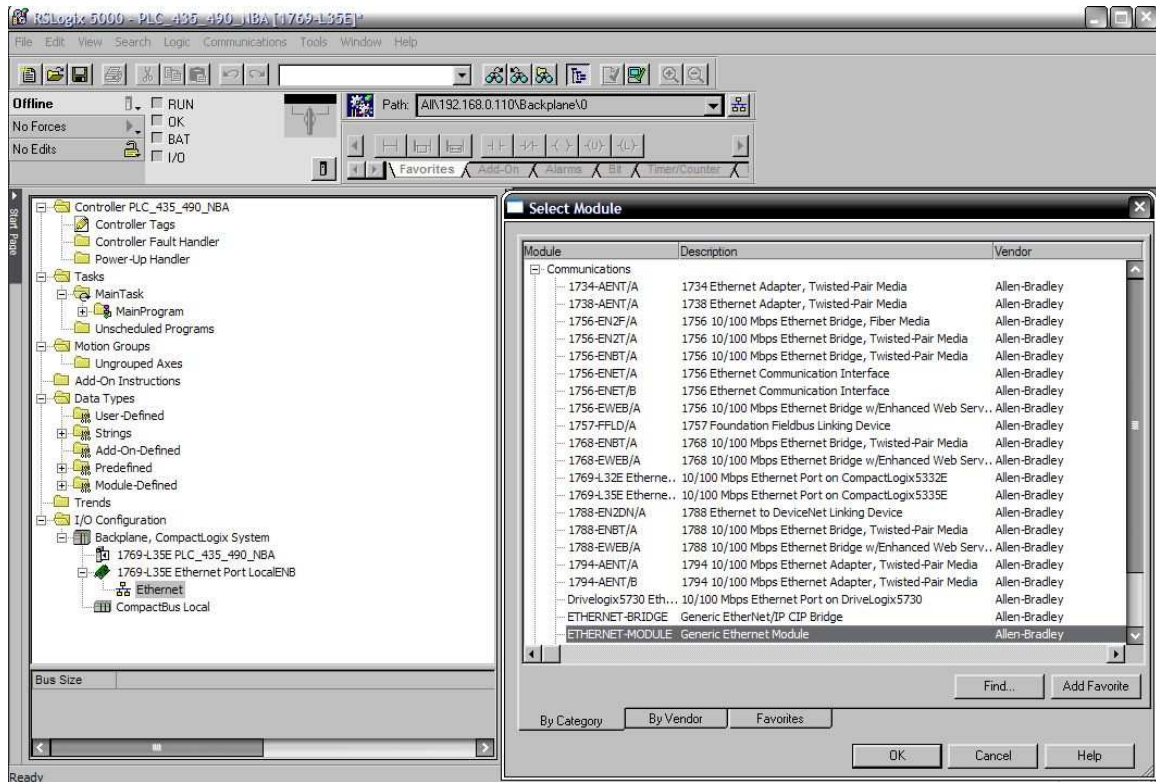
rick@rtaautomation.com

Overview

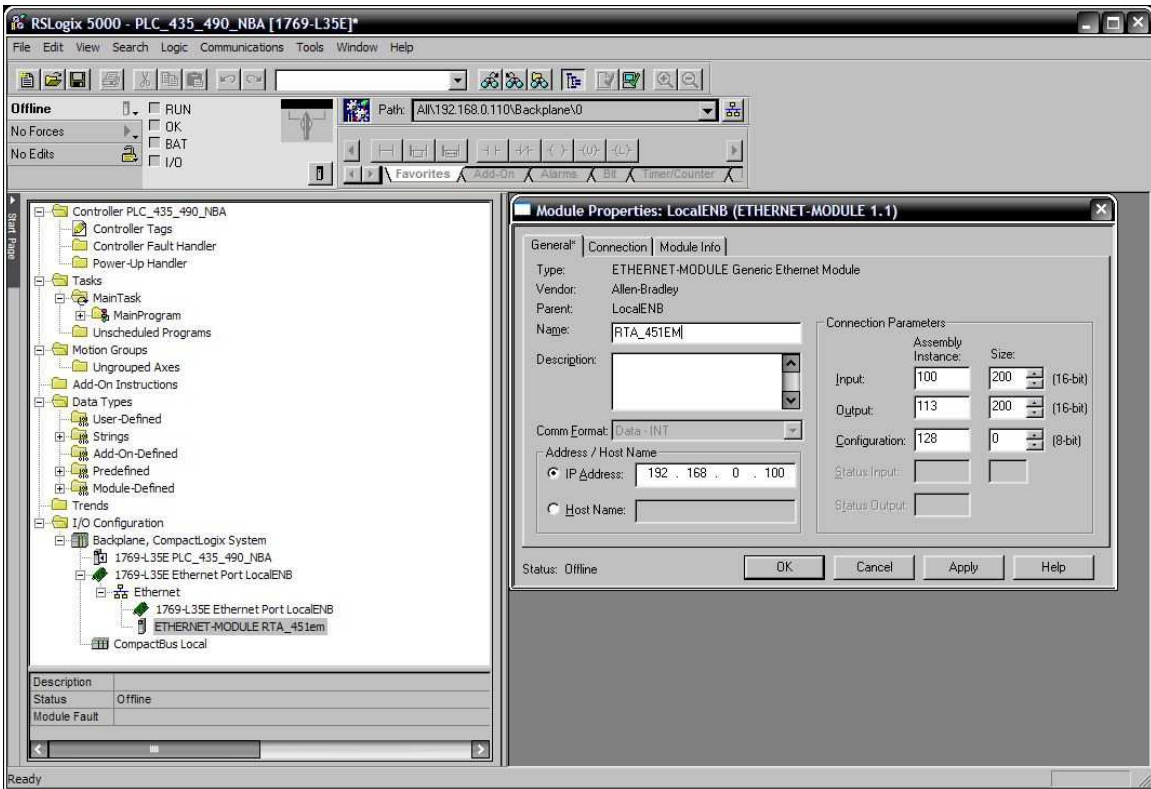
The 451EM Ethernet Modbus Master Gateway converts a network of Modbus RTU Slave devices to a single node of I/O on an EtherNet/IP or Modbus TCP network..

Data Mapping

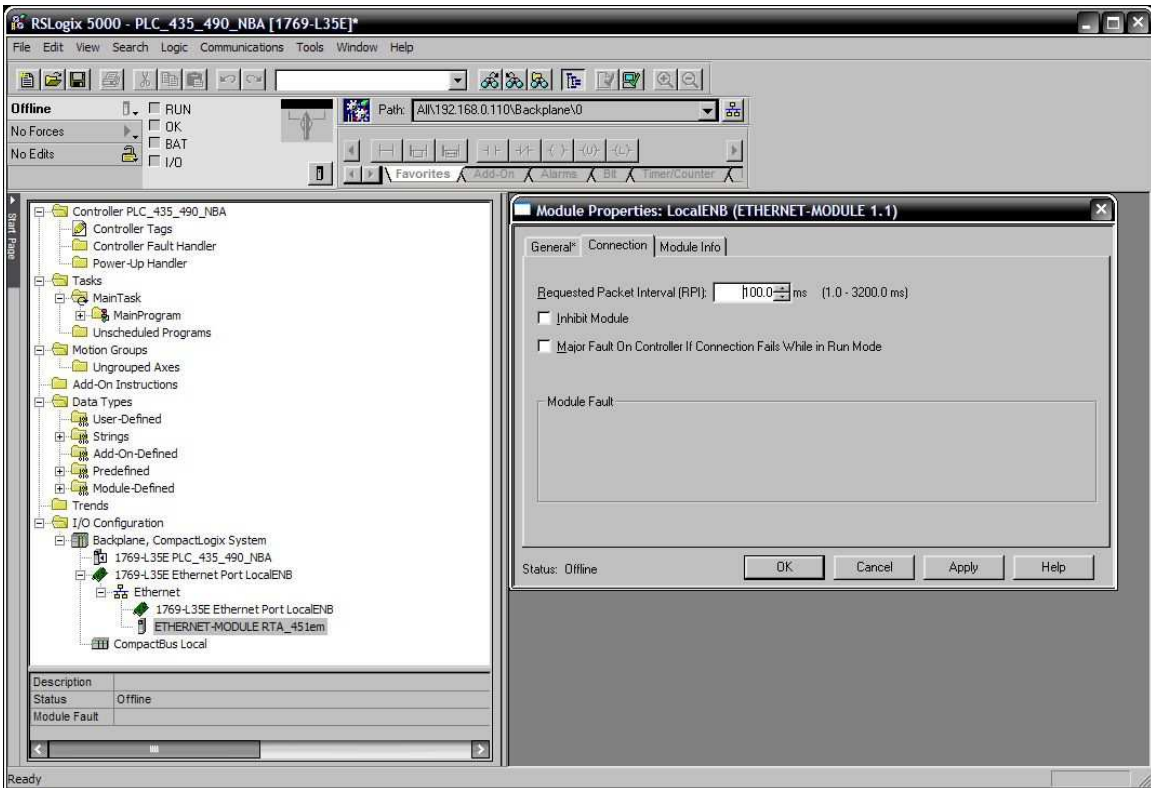
200 16-bit registers in each direction (read and write) are provided for sharing serial data with the various Ethernet protocols. Modbus RTU serial nodes 32 and 64 provide the simple serial interface to the Exlink from the host processor.



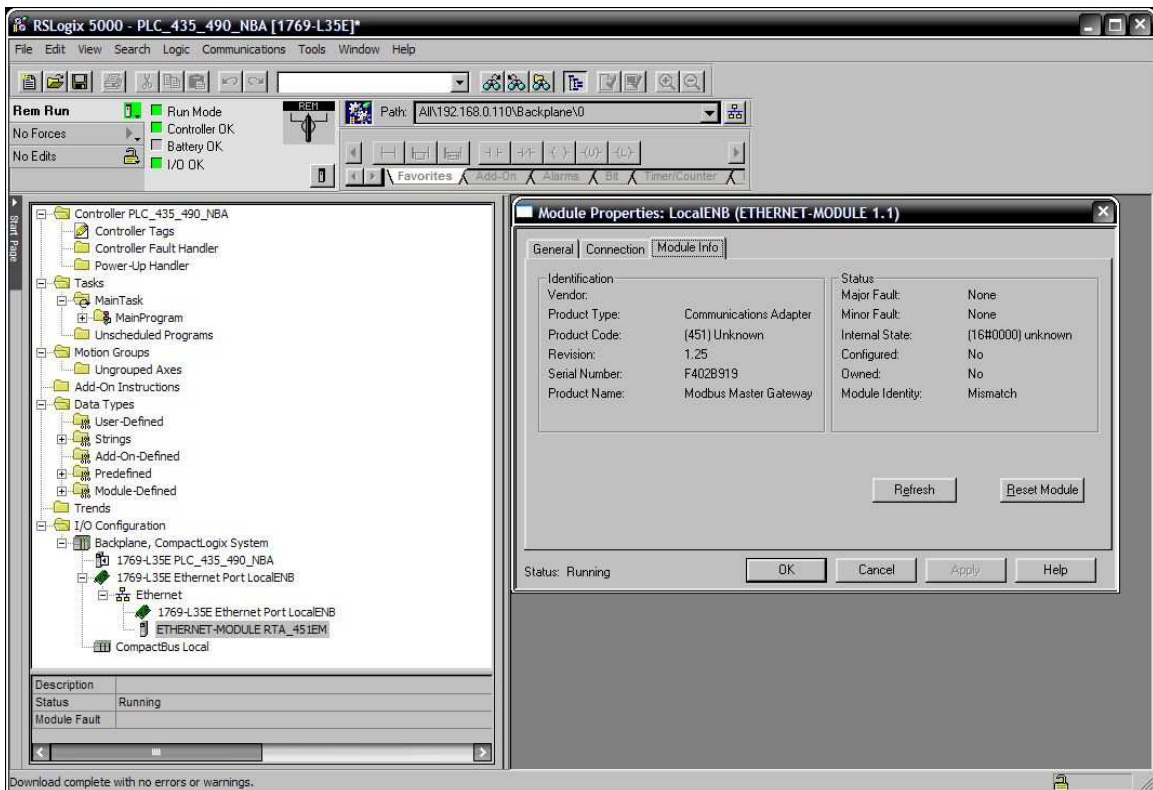
Select Ethernet in I/O Configuration, find and select Generic Ethernet Module.



Under Module Properties fill in Connection Parameters exactly as shown above.



Under Module Properties select Connection and set as slow as possible to reduce network traffic.



Go online and look at the Module Info. The Identification should have the revision, serial number and product name. Information in Status is not important.